

#stopCOVID-19

DRT Ultra

Arc discharge bactericidal high-pressure lamp is designed to kill pathogenic microorganisms – bacteria, viruses and different kinds of fungi. Ultraviolet radiation triggers irreversible damages in microbes DNA and causes their death. DRT Ultra is used to decontaminate air and surfaces in premises which is one of the most efficient methods of battle with disease-producing organisms including influenza viruses.

BACTERICIDAL LAMP DRT ULTRA

Lamps of DRT type are an effective source of ultraviolet radiation in the spectral regions A, B and C, and also produce ozone. Its radiation kills up to 99% of various microorganisms, including those resistant to chemical effect.

Lamps are widely used to decontaminate air, water, tools in the following areas:

- Food industry
- Medicine
- Agriculture
- Biology
- Industrial production
- Polymerization of varnishes and paints



Important

It is designed to operate from an alternating current network with a frequency of 50 Hz and voltage of 220 V using appropriate devices. One of the connection options is in the figures below.

Attention!

High concentrations of ozone represent a serious danger to human health. When the appliance is turned on the room must be constantly ventilated. If the working lamp is located in human sight it can cause body burns and irreversible eye damages.

Caution! High temperature during the operation!

MAIN LAMP PARAMETERS								
Lamp type	Power, W	Electric current*, A	Voltage on lamp, V	Irradiation in regions A, B, C, mW/m ² **			Bactericidal flux, W	Luminous flux*, lm
				Region A, 315-400 nm	Region B, 280-315 nm	Region C, 230-280 nm		
DRT 125-1	125	1,6	95	980	830	720	8	3300
DRT 125-3	125	1,6	95	980	830	720	8	3300
DRT 250	250	2,2	130	1800	1400	1200	13,5	6700

* - Reference quantity

** - After 10 hours of operating in the distance 1 m from lamp

Note: Power levels below nominal and luminal flux levels above nominal aren't standardized.

General view, overall and connecting dimensions of lamps

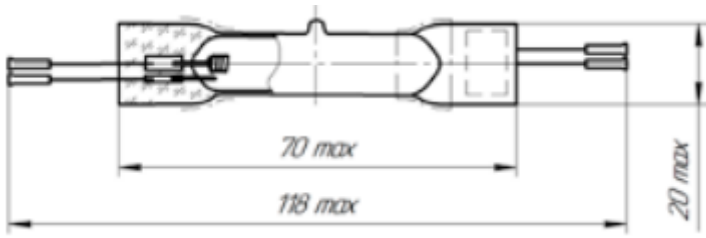


Figure 1 – Lamp DRT 125-1

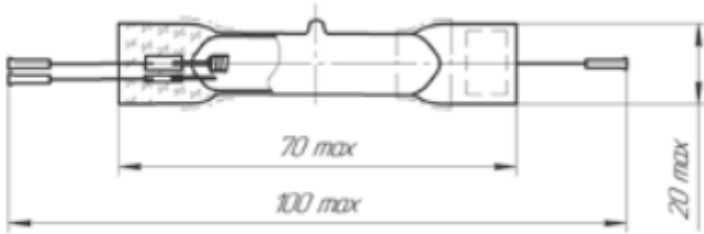


Figure 2 – Lamp DRT 125-3

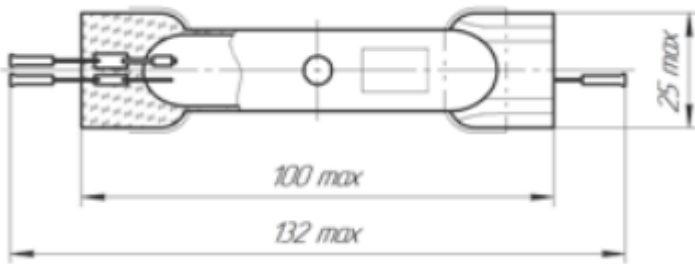
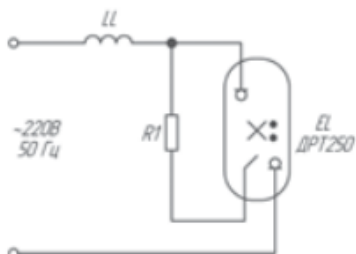
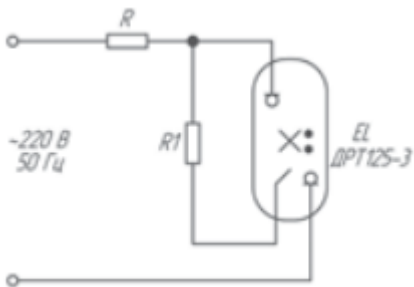
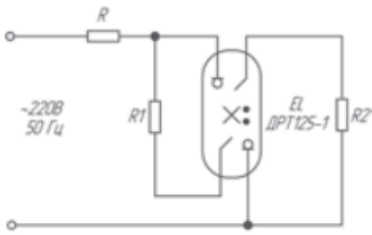


Figure 3 – Lamp DRT 250

Connection circuit of lamp



- E1** – lamp type DRT
- LL** - throttle 1I250DRL
- R1, R2** – resistors 15-20 kΩ
- R** – active ballast resistance 78-80 Ω